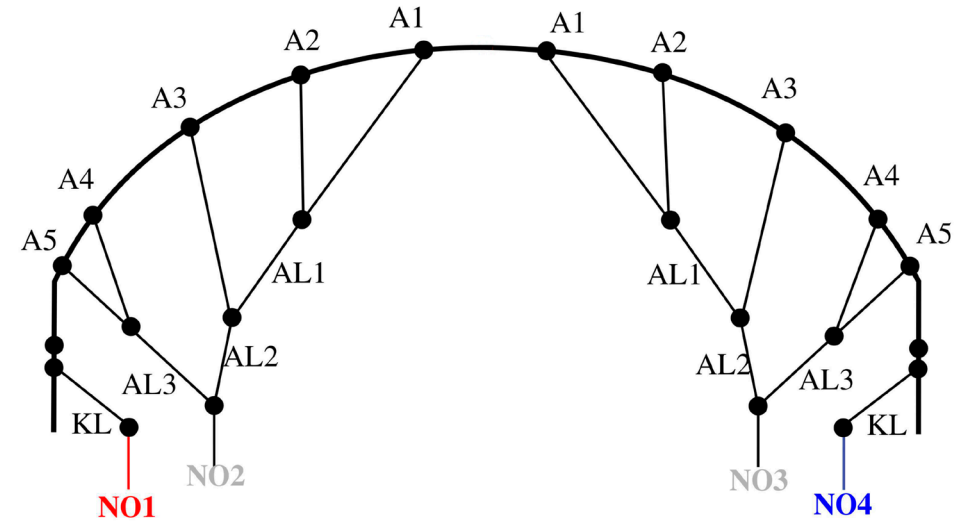


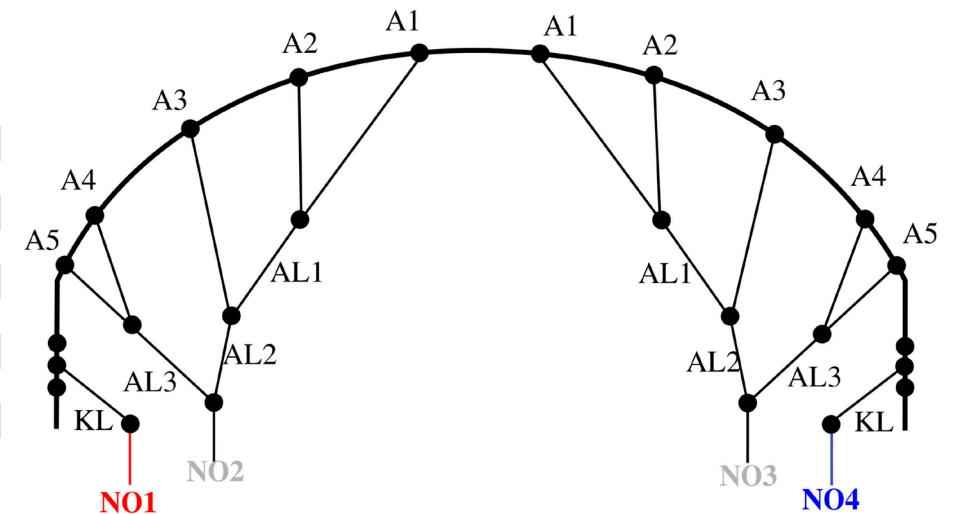
BRIDLE LINES SHOULD BE REGULARLY CHECKED AND MAINTAINED IN THE CORRECT TRIM OR THE KITE WILL NOT PERFORM AS DESIGNED. IF THEY ARE WORN OR NOT TO FACTORY SPECIFICATION (+ OR - 20MM) THEY SHOULD BE REPLACED. REPLACEMENTS CAN BE ORDERED INDIVIDUALLY OR AS A FULL SET FROM YOUR SHOP/DEALER.

1. Open the kite out in a large space.
2. Inspect all bridle lines for wear/damage. Take note or label lines to be replaced.
3. Use a tape measure to measure the remaining bridles. Ask a friend to hold the end of the tape measure and bridle line in position to get an accurate measurement.
4. Pull on the line to add some tension and note each measurement.
5. Refer to the bridle line measurements sheet and rigging diagrams. Take note or label lines to be replaced.
6. Replace all bridle lines as necessary.

### EDGE V10 5/6M RIGGING DIAGRAM



### EDGE V10 7/8/9/10/11/13/15/19M RIGGING DIAGRAM



### BRIDLE LINE LENGTHS. ALL MEASUREMENTS IN MM

	5m	6m	7m	8m	9m	10m	11m	13m	15m	17m	19m
A1	760	835	900	950	1005	1060	1115	1215	1300	1380	1450
A2	365	400	430	455	485	510	540	585	625	665	700
A3	560	610	660	715	760	800	840	915	980	1045	1100
A4	465	490	530	560	600	630	665	720	770	820	865
A5	360	390	400	410	460	480	500	540	550	610	660
AL1	600	660	710	760	805	850	895	975	1040	1110	1165
AL2	1000	1090	1180	1235	1310	1380	1450	1580	1690	1800	1895
AL3	710	775	835	860	910	960	1010	1100	1170	1250	1315
KL	590	620	685	710	750	790	830	930	950	1000	1050