



CODE_{v1}

PERFORMANCE FREERIDE

TEAM RIDER: PAULINO PEREIRA

OZONE®

INSPIRED BY NATURE // DRIVEN BY THE ELEMENTS



OZONEKITES

CODE_{v1}

PERFORMANCE FREERIDE

- ALL ROUND FREE RIDE PERFORMANCE
- MEDIUM ROCKER AND MEDIUM FLEX
- PROGRESSIVE OUTLINE WITH AMAZING CONTROL
- INTERMEDIATE TO ADVANCED FREE RIDERS

RANGE OF USE

	0	5	10
ENTRY LEVEL	●●●●●●●●	●●●●●●●●	●●●●●●●●
INTERMEDIATE	●●●●●●●●	●●●●●●●●	●●●●●●●●
ADVANCED	●●●●●●●●	●●●●●●●●	●●●●●●●●
FREERIDE	●●●●●●●●	●●●●●●●●	●●●●●●●●
FREESTYLE	●●●●●●●●	●●●●●●●●	●●●●●●●●
WAKESTYLE	●●●●●●●●	●●●●●●●●	●●●●●●●●
BIG AIR	●●●●●●●●	●●●●●●●●	●●●●●●●●
LIGHTWIND	●●●●●●●●	●●●●●●●●	●●●●●●●●
WAVE	●●●●●●●●	●●●●●●●●	●●●●●●●●

SUGGESTED SIZE & RIDER WEIGHT RANGE

- 129 X 38 CM : 40-60KG
- 132 X 39 CM : 45-65KG
- 135 X 40 CM : 50-70KG
- 138 X 41 CM : 65-85KG
- 141 X 42 CM : 80-100KG
- 144 X 43 CM : 95KG +

Size and weight range is indicative only based on normal riding conditions. Actual range will vary based on rider preference, skill level and strength of wind.



OZONE®

INSPIRED BY NATURE // DRIVEN BY THE ELEMENTS

f v i OZONEKITES



THE CODE IS AN OUTSTANDING, ALL ROUND FREE RIDE PERFORMANCE TWIN TIP BOARD THAT'S FUN, FAST AND SMOOTH WITH MASSIVE POP POTENTIAL. IT HAS A REFINED COMBINATION OF A PROGRESSIVE OUTLINE, MEDIUM ROCKER AND FLEX, WITH A DOUBLE CONCAVE BOTTOM SHAPE DEVELOPED SPECIFICALLY FOR INTERMEDIATE TO ADVANCED FREE RIDERS.

The name 'Code' represents the Ozone team coming together to take on the challenge of designing, developing and manufacturing boards that match the performance and quality of our Kites. We've worked with the same intense level of R&D that goes into our kites to bring the Code to life. Our new in-house production process uses the latest technologies to ensure every aspect of production is carried out perfectly to bring you a perfect no compromise board.

We love to see people enjoying themselves on the water, our aim with creating the Code was to make riding even more engaging and easy to handle. A medium rocker and flex combined with a rounder outline gives this board excellent carving performance as it flows effortlessly from rail to rail. It's stable in fast power carves and gives you a very fluid consistent linear feeling. The

Code has amazing control in choppy water and remains ultra smooth underfoot, even in gnarly chop. In overpowered conditions, the swallow tip design helps the board maintain its edge that allows the rider to perfectly load up for big boosts.

One of the main frustrations riders have on the water is the amount of spray they get in the face, one of our main criteria was to design a board that addresses this problem and practically eliminates spray!

The Code fits a diverse range of riding styles and levels from free riding and cruising around, to big airs or freestyle and handle pass tricks. The board gains speed fast and drives hard upwind, delivering great response from the smallest movements. For riders that love board off tricks without using a handle, there is a grab recess on each side of the board for grip.

CODE V1 FEATURES



EXCEPTIONAL OZONE FACTORY CONSTRUCTION

World-class construction in our own factory, using the highest quality materials and hand checked Quality Control at every step. The Ozone factory also manufactures our Kites, Paragliders and Speed Wings; the same Quality Control processes are used across all products.



FREERIDE OUTLINE

The Freeride rounded-style outline provides excellent carving performance from a small to wide carving radius, plus solid high wind control and edge retention for boosting even when overpowered.

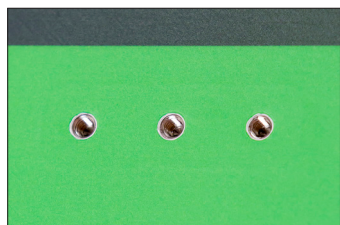
CONTINUOUS MEDIUM ROCKER WITH MEDIUM FLEX

The continuous medium rocker combined with a medium all-round flex offers a smooth ride with ultimate control in heavy chop, good upwind performance, optimized pop and soft landings.



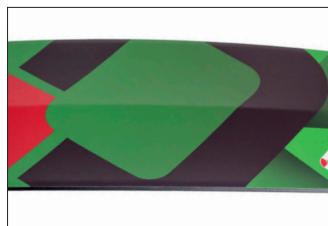
HIGHEST QUALITY FIBERGLASS

Precise lamination using high quality Biaxial and UD fiberglass layers to provide the ultimate balance of flex, response and strength.



A-GRADE 316 STAINLESS STEEL INSERTS

Highest quality 316 Stainless Steel inserts embedded into ABS blocks. This insert construction offers superior strength for powered riding and using boots.



DOUBLE CONCAVE BOTTOM SHAPE

The Double Concave Bottom Shape transitioning to flat towards the tips provides a smooth ride in choppy conditions and powerful carving performance with good grip. It also helps to absorb and control fast landings, making engaged big air and kiteloops forgiving on touch down.



SWALLOW TIPS

Swallow shaped tips allow a strong edge hold without the feeling of being locked on a rail, while increasing stability and control when carving. This gives a strong edge hold and positive feel when carving or loading and releasing off the water during a jump.



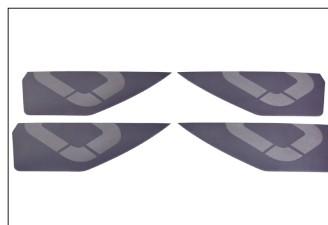
A-GRADE PAULOWNIA CORE

The premium A-grade Paulownia core provides ultimate flex characteristics, amazing strength, and reduced weight.



GRAB RECESS

Grab Recesses on both rails if riding without a handle.



FINS V2

Two fin designs offer the choice for solid edge hold or increased freedom. Choose the 45mm size for maximum grip while edging and taking off to boost. The 35mm size is perfect for freestyle riders using boots and for those looking for increased freedom while carving. Our V2 fins are precisely injection molded using advanced glass-filled nylon materials for high strength and wear resistance.

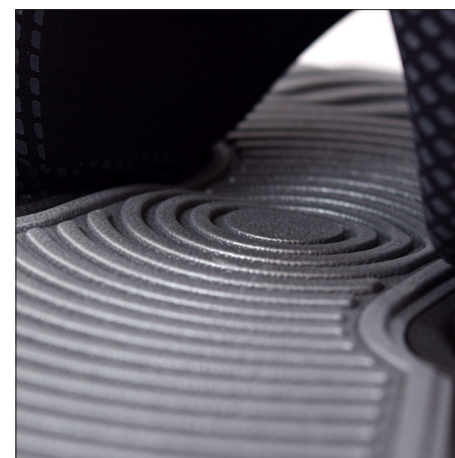
FOOTPADS AND STRAPS_{v2}

HAVING COMFORTABLE FOOTPADS AND STRAPS MAKES THE DIFFERENCE BETWEEN A GOOD SESSION AND A BAD ONE. OUR V2 DESIGN PROVIDES THE ULTIMATE BALANCE BETWEEN PERFORMANCE AND COMFORT TO KEEP THE GOOD SESSIONS ROLLING!



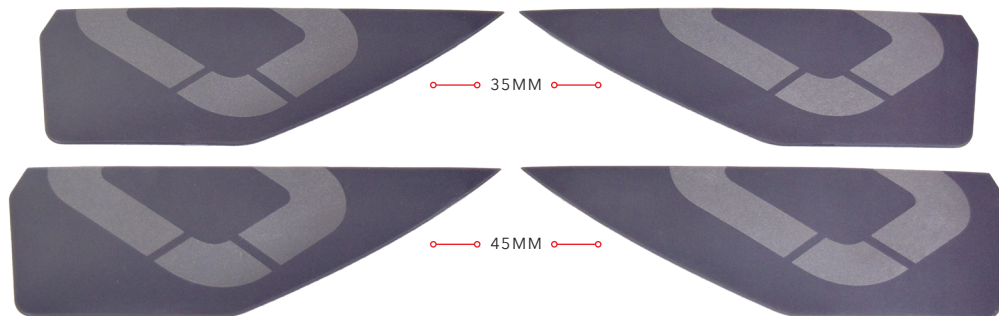
Our foot straps are ergonomically designed featuring Ultralon Performance Foam® and plush neoprene for the ultimate in comfort and control while providing a precise fit. Ultralon foam has an exceptional resistance to packing out, it doesn't compress over time and has an outstanding formability enabling anatomical adaptation. Combined with the quick and easy velcro size adjustment, the strap provides a snug fit to all foot shapes and sizes or wetsuit booties.

We have designed our footpads to provide superior comfort, adaptability and strength. The multi-density foam pads combine a shock absorption base layer and a higher density top layer with precise contouring and texture for increased traction to keep your feet comfortably locked in. The baseplate is built strong with nine strap positions and five stance angle options allowing for uncompromised adaptability.



FINS_{v2}

TWO FIN DESIGNS OFFER THE CHOICE FOR SOLID EDGE HOLD OR INCREASED FREEDOM.



Choose the 45mm size for maximum grip while edging and taking off to boost. The 35mm size is perfect for freestyle riders using boots and for those looking for increased freedom while carving.

Our V2 fins are precisely injection molded using advanced glass-filled nylon materials for high strength and wear resistance.



BOARD HANDLE_{v2}

STRONG AND DURABLE WITH A TEXTURED UNDERSIDE GRIP FOR MAXIMUM CONTROL DURING WATER STARTS TO BOARD OFFS.

