



CHRONO_{V3}


UNIVERSAL HIGH LEVEL FOIL KITE

📷 HÅKON MÆLAND

OZONE®

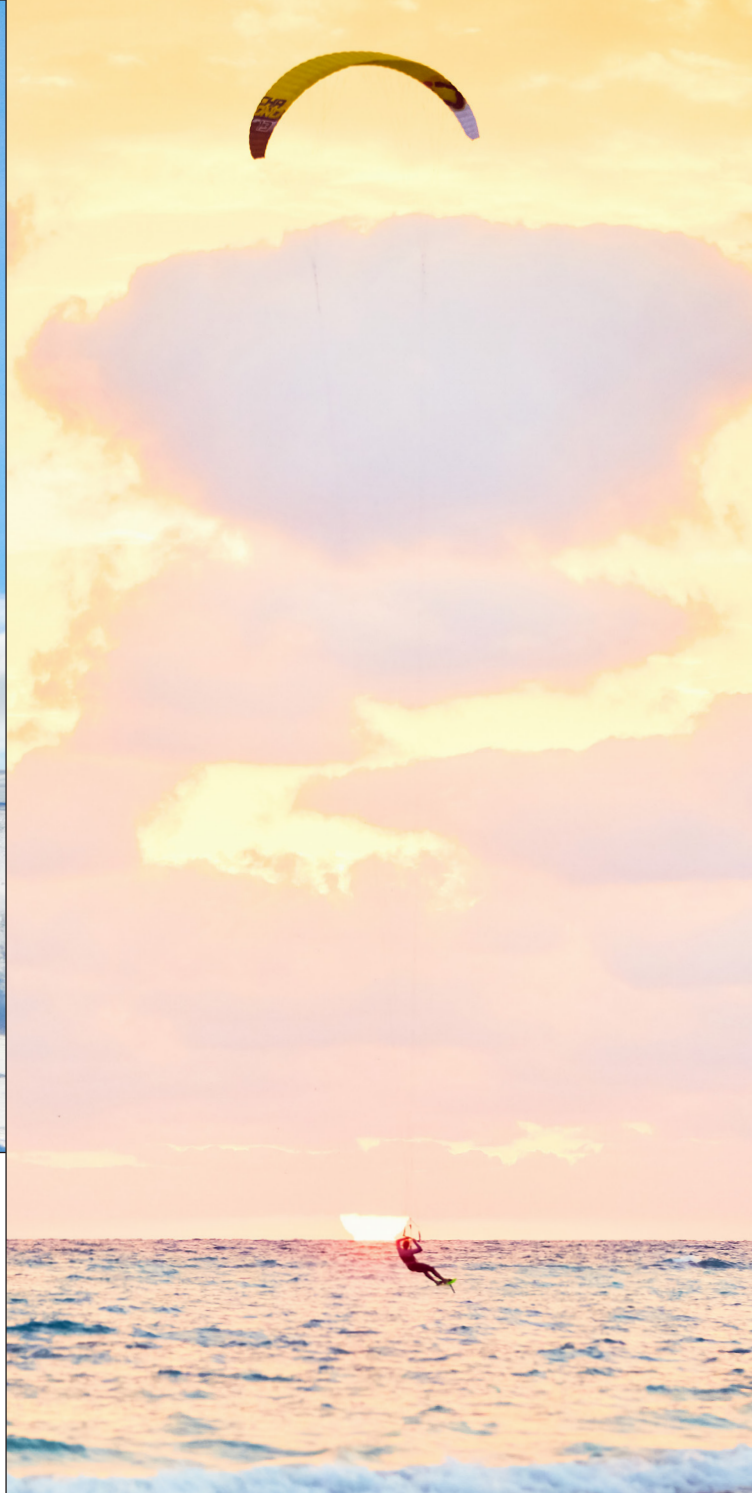
INSPIRED BY NATURE // DRIVEN BY THE ELEMENTS

f v i 🌐 OZONEKITES

- 
- UNIVERSAL HIGH LEVEL FOIL KITE
 - ANY SURFACE - WATER, LAND OR SNOW
 - STATE OF THE ART TECHNOLOGY
 - EXPERIENCED RIDERS OR WITH PREVIOUS FOIL EXPERIENCE

IMPORTANT NOTES

- The kite is water re-launchable, but we recommend that you keep it flying and out of the water if possible! A drainage system on the wing tip allows any water that may have entered the kite to drain out. Do not use the kite in waves.
- Always use a Brake Handle when flying a foil kite. This is the handle/line spanned between the back leader lines on your control system. This easy to grab handle makes inflation, self-landing and reverse launch easier.
- This kite features a simple yet effective front line flag out release. After releasing the flag out check the speed system, bridle lines and flying lines for twists before restart.
- Speed System and Bridle lines should be regularly checked and maintained in the correct trim or the kite will not perform as designed. If they are worn or not to factory specification (+ or - 15mm) they must be replaced. How To videos and a Bridle Check PDF with all measurements can be found at www.ozonekites.com

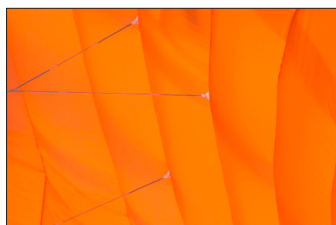


CHRONO V3 FEATURES



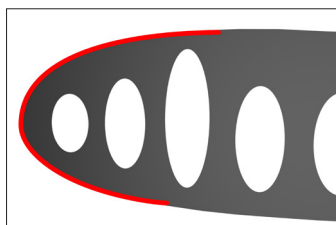
EXCEPTIONAL OZONE FACTORY CONSTRUCTION

World-class construction in our own factory, using the highest quality materials and hand checked Quality Control at every step. The Ozone factory also manufactures our Paragliding and Speed Wing range; the same Quality Control processes are used across all products.



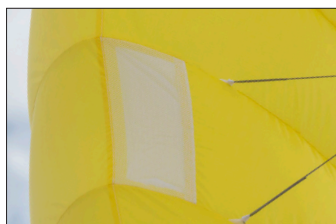
HIGH PERFORMANCE MATERIALS

High-tenacity sailcloth with extremely low porosity values and an overall lightweight.



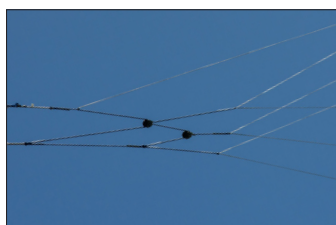
L.E PROFILE REINFORCEMENTS

The Leading Edge is reinforced with flexible lightweight plastic battens to maintain the shape of the profile during angle of attack changes and turbulent airflow. This drastically improves overall performance as the foil remains true to the designed shape.



OPTIMIZED LEADING EDGE AIR INTAKES

Precisely positioned intake valves along the Leading Edge lead to a stability increase at all angles of attack. The inflation is easy and safe as the kite rapidly inflates.



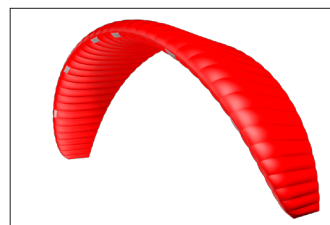
DOUBLE PULLEY SPEED SYSTEM

Using high spec low friction Ronstan Orbit pulleys to reduce wear and rider fatigue while improve feeling and performance of the kite.



DESIGNED WITH OZ-CAD

The FUTURE is NOW - All Ozone kites are designed and developed using our own highly advanced custom built CAD software. Our designers are able to work with parameters specifically formulated to calculate unique aspects required in technical Inflatable and Foil kites. Part of our design team is dedicated to the upgrade of the CAD code and addition of new modules and features to the program as the development of our kites continues.



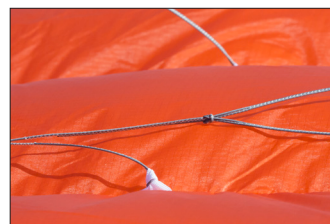
PERFORMANCE DOUBLE SURFACE

The Chrono V3 has a lightweight double surface design that is mid-high aspect ratio and combines 38 to 44 cells depending on the size selection. The high number of cells means the ribs are positioned closer together, producing an ultra smooth surface. This corresponds to reduced drag and a clean profile, resulting in superior flight efficiency.



INTERNAL DIAGONALS AND STRAPS

Internal span-wise straps work in unison with optimized diagonal ribs, distributing load from the bridles evenly and effectively. This increases the internal structural balance, while allowing the top and bottom surfaces to maintain the designed profile without being distorted from indirect tension or loads.



SHEATHED DYNEEMA BRIDLE LINES

High quality, low stretch sheathed Dyneema bridle lines for maximum strength and performance. This is the same bridle line we have used on our Snowkite range for the past 10 years.



WATER DRAINAGE CHANNELS

An internal channel is shaped into the end of each cell along the trailing edge. This allows loose sand or water to run between the cells and out of the tips during flight. The Velcro sealed cells at the tips can be opened for cleaning the kite. Always clean your kite by emptying any water, sand or dirt as this will prolong the life of the kite and help it fly as designed.



FOIL CONTACT WATER CONTROL SYSTEM

- PUSH AWAY QUICK RELEASE
- TWO RELEASE MODES
- ANTI-TWIST FLAG OUT LINE AND SPINNING HANDLE
- AUTO POSITIONING CHICKEN LOOP
- FOIL BRAKE HANDLE
- SOFT BAR ENDS WITH LEADER LINE ADJUSTMENT
- STAINLESS STEEL LEADER LINE PIN
- LIGHT WEIGHT ALUMINIUM CENTRE PIECE
- PU COVERED DE-POWER LINE
- STAINLESS STEEL TRIMMER BRACKET
- CLAMCLEAT TRIMMER
- BUNGEE TRIM LINE & MAGNETIC HANDLE
- 500KG/300KG FLYING LINES
- ERGONOMIC EVA GRIP
- 38CM, 45CM, 50CM AND 55CM SIZES

THE FOIL CONTACT-WATER CONTROL SYSTEM OFFERS THE LATEST IN RELEASE FEATURES, A CLEAN CONTROL BAR DESIGN AND A SIMPLE EASY-TO-USE TRIMMING SYSTEM FOR CLOSED-CELL FOIL KITES.

The Brake Handle makes inflation, self-landing and reverse launch easier. Always use the Brake Handle when flying a foil kite. The Brake Handle is removable to use the control system with an inflatable kite.



FOIL RACE CONTROL SYSTEM

- PUSH AWAY QUICK RELEASE
- TWO RELEASE MODES
- ANTI-TWIST FLAG OUT LINE AND SPINNING HANDLE
- AUTO POSITIONING CHICKEN LOOP
- FOIL BRAKE HANDLE
- SOFT BAR ENDS WITH LEADER LINE ADJUSTMENT
- STAINLESS STEEL LEADER LINE PIN
- DOUBLE PULLEY TRIM SYSTEM
- LIGHT WEIGHT ALUMINIUM CENTRE PIECE
- PU COVERED DE-POWER LINE
- STAINLESS STEEL TRIMMER BRACKET
- CLAMCLEAT TRIMMER
- LOW DRAG 300KG/200KG FLYING LINES
- ERGONOMIC EVA GRIP
- 38CM, 45CM, 50CM, 55CM AND 62CM SIZES

THE ULTIMATE KITE RACING CONTROL SYSTEM, CUSTOM DESIGNED IN COLLABORATION WITH OUR ELITE RACE TEAM INCLUDING THE WORLDS TOP KITE RACERS.

Utilising top of the line components and materials the Foil Race Control System is smooth and reliable on the course. Incorporating a double pulley system offers minute trimming on the go with less force required. The long de-power line allows the rider to easily hike out maintaining maximum power against the foil/fins. 300kg front and 200kg back lines reduce drag for faster speeds on the course.

The Brake Handle makes inflation, self-landing and reverse launch easier. Always use the Brake Handle when flying a foil kite. The Brake Handle is removable to use the control system with an inflatable kite.



