

## 1. Preparing the replacement batten

You will need: sticky material strips (inside kite repair pack) cutting tool e.g. pliers, sand paper, spare batten (inside kite bag)

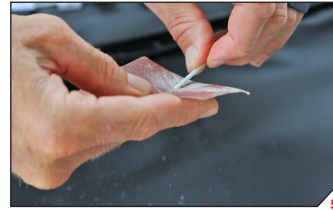
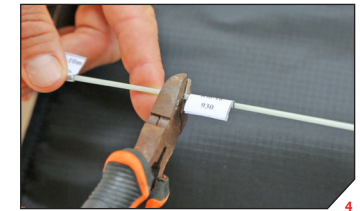
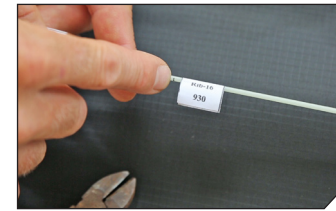
2. The batten needs to be cut to length. Refer to the rib diagrams and batten measurements. Locate the corresponding label and mark on the spare batten to find the correct length.
3. Note: If you are unsure or if markings/labels are not visible, measure the length to ensure you are cutting at the correct location.
4. Cut the batten to length.
5. Round the cut with the cutting tool and sand paper.
6. Apply the sticky material strip to the cut end.
7. Remove all labels.

## 8. Removing the damaged batten.

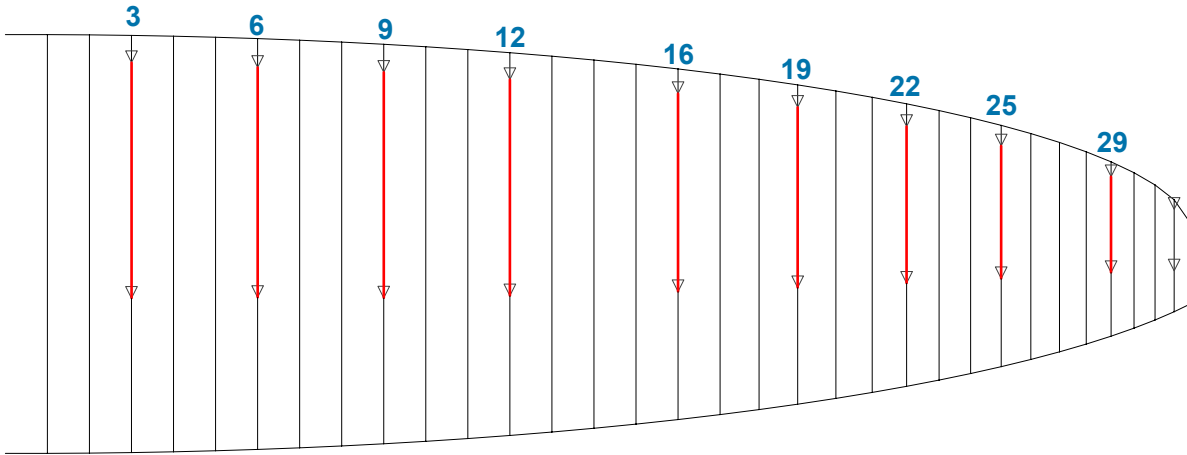
Each chord batten is accessible via the nearest valve opening. The chord battens run through a sock sewn onto the internal rib.

9. Reach inside the kite through the valve opening to locate the rib and batten. Note: to access battens nearest to the wing tip you will need to reach through rib cut-outs.
10. Carefully pull the rib and batten end out of the valve. Do not force the material.
11. Open the end velcro.
12. Slowly pull the batten out from the sock. Note: if the batten is broken into pieces, carefully remove each broken section by sliding it through the sock.
13. **Installing the replacement batten**  
Feed the batten into the sock opening.
14. Slowly insert the batten into the sock. Do not force it - if it feels tight, check that the batten is not obstructed e.g. by a fold or kink in the sock material.
15. Once fully inserted, close the end velcro.
16. Carefully push the batten and rib back into the kite.

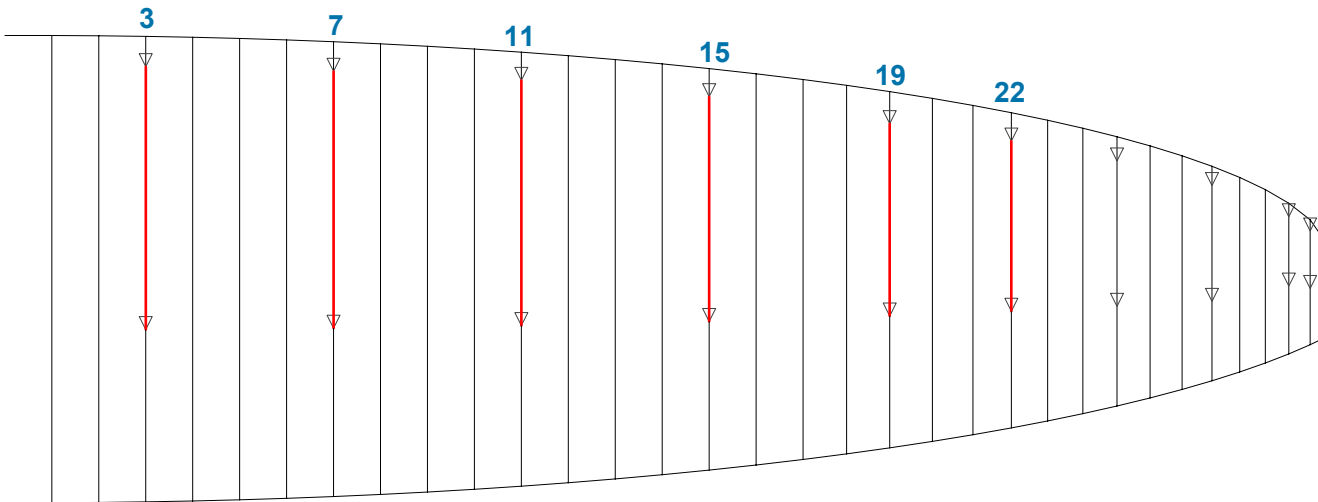
17. Check the batten is installed correctly and all material surfaces look correct.



**BATTEN POSITIONS R1 V5 10M, 11M, 14M, 15M**



**BATTEN POSITIONS R1 V5 19M, 21M**



10M		
Rib	Thickness	Length (mm)
3	2.5MM	1107
6	2.5MM	1091
9	2.5MM	1060
12	2.5MM	1016
16	2.5MM	930
19	2.5MM	846
22	2.5MM	748
25	2.5MM	636
29	2MM	397

11M		
Rib	Thickness	Length (mm)
3	2.5MM	1160
6	2.5MM	1142
9	2.5MM	1110
12	2.5MM	1064
16	2.5MM	974
19	2.5MM	886
22	2.5MM	784
25	2.5MM	666
29	2MM	416

14M		
Rib	Thickness	Length (mm)
3	2.5MM	1304
6	2.5MM	1284
9	2.5MM	1249
12	2.5MM	1196
16	2.5MM	1095
19	2.5MM	997
22	2.5MM	881
25	2.5MM	749
29	2MM	469

15M		
Rib	Thickness	Length (mm)
3	2.5MM	1349
6	2.5MM	1328
9	2.5MM	1291
12	2.5MM	1237
16	2.5MM	1133
19	2.5MM	1031
22	2.5MM	912
25	2.5MM	775
29	2MM	485

19M		
Rib	Thickness	Length (mm)
3	2.5MM	1365
7	2.5MM	1333
11	2.5MM	1272
15	2.5MM	1176
19	2MM	1054
22	2MM	932

21M		
Rib	Thickness	Length (mm)
3	2.5MM	1436
7	2.5MM	1403
11	2.5MM	1338
15	2.5MM	1238
19	2MM	1109
22	2MM	980