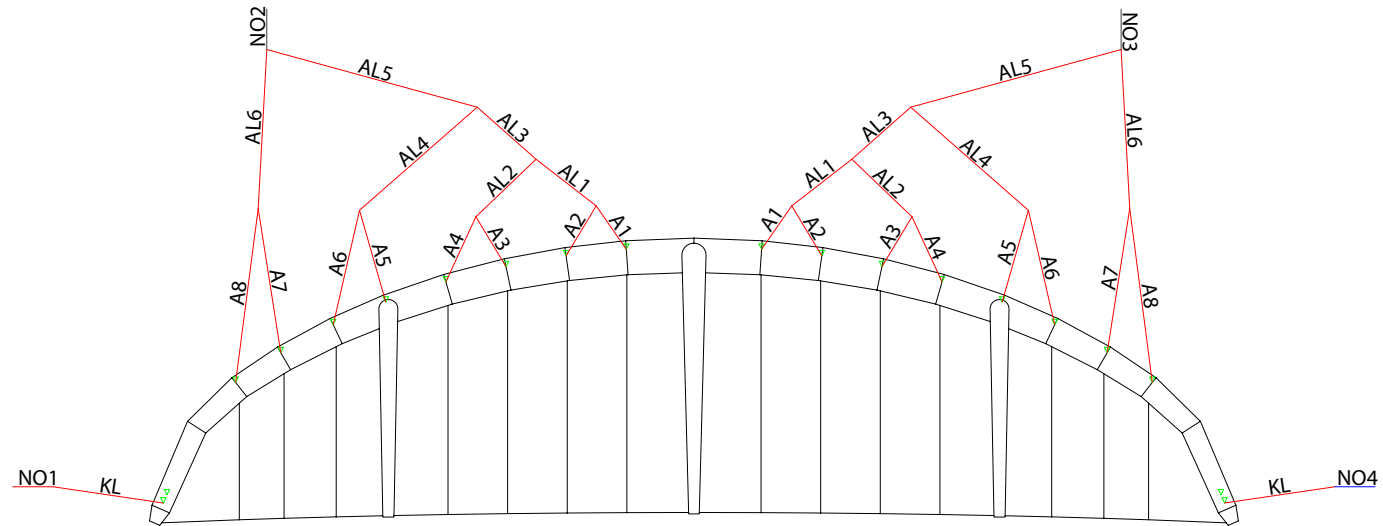


## VORTEX ULTRA-X RIGGING DIAGRAM

BRIDLE LINES SHOULD BE REGULARLY CHECKED AND MAINTAINED IN THE CORRECT TRIM OR THE KITE WILL NOT PERFORM AS DESIGNED. IF THEY ARE WORN OR NOT TO FACTORY SPECIFICATION (+ OR - 20MM) THEY SHOULD BE REPLACED. REPLACEMENTS CAN BE ORDERED INDIVIDUALLY OR AS A FULL SET FROM YOUR SHOP/DEALER.

1. Open the kite out in a large space.
2. Inspect all bridle lines for wear/damage. Take note or label lines to be replaced.
3. Use a tape measure to measure the remaining bridles. Ask a friend to hold the end of the tape measure and bridle line in position to get an accurate measurement.
4. Pull on the line to add some tension and note each measurement.
5. Refer to the bridle line measurements sheet and rigging diagrams. Take note or label lines to be replaced.
6. Replace all bridle lines as necessary.



### BRIDLE LINE LENGTHS. ALL MEASUREMENTS IN MM

LINE	5m	6m	7m	8m	9m	10m	11m	12m	13m	15m
<b>A1</b>	405	450	490	520	575	610	640	670	695	750
<b>A2</b>	225	250	275	295	330	350	370	385	400	430
<b>A3</b>	335	370	400	430	455	480	505	525	545	590
<b>A4</b>	165	185	205	220	235	245	255	270	280	300
<b>A5</b>	325	360	390	415	440	465	485	510	530	570
<b>A6</b>	180	200	220	230	250	260	275	285	299	320
<b>A7</b>	350	390	420	450	480	500	525	550	568	610
<b>A8</b>	225	245	275	290	310	325	340	355	368	400
<b>AL1</b>	585	615	700	745	770	810	850	890	915	990
<b>AL2</b>	245	255	290	310	330	345	365	380	395	425
<b>AL3</b>	475	560	560	600	640	670	705	735	760	820
<b>AL4</b>	325	380	385	410	435	455	480	500	520	560
<b>AL5</b>	765	840	915	970	1030	1080	1135	1185	1230	1325
<b>AL6</b>	690	760	815	870	930	975	1025	1070	1110	1190
<b>KL</b>	465	510	590	570	620	657	690	720	745	810