

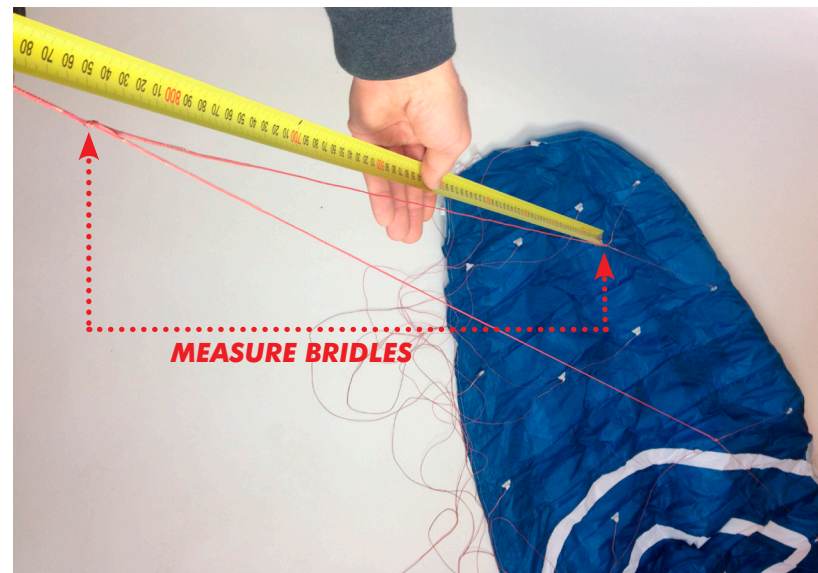
## CHECKING BRIDLES AND SPEED SYSTEM FOR STRETCH OR SHRINKAGE

WE RECOMMEND YOU REGULARLY CHECK YOUR KITES BRIDLES AND SPEED SYSTEM TO KEEP YOUR KITE FLYING AT TOP PERFORMANCE. USE THE MEASUREMENTS ON THE NEXT PAGE TO CHECK YOUR BRIDLE LENGTHS.

### RECOMMENDATIONS

- Open your kite in a large space, big enough to spread your kite out fully.
- Use a tape measure to measure the bridles as in the image.
- Print out the sheet and write down any differences.

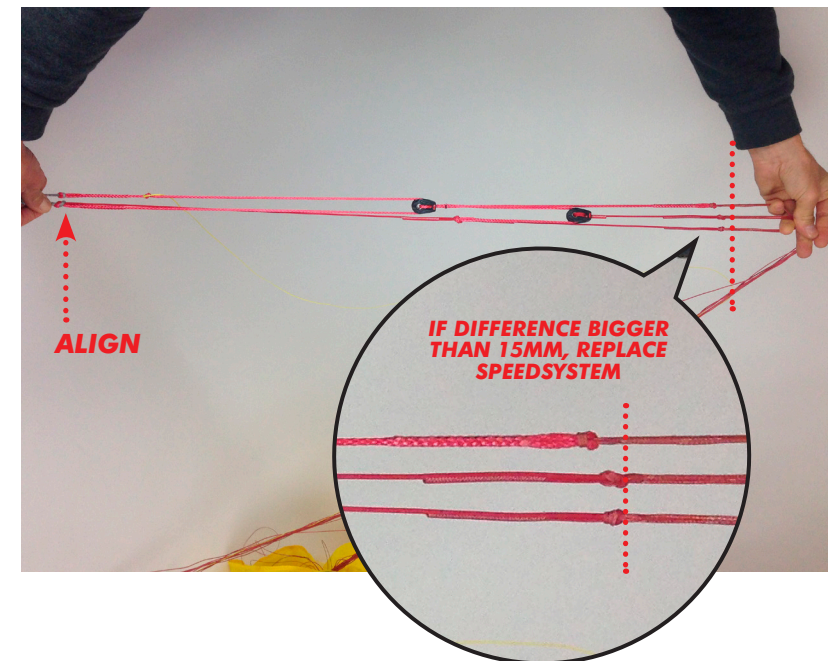
If your bridles are out by more than 15mm we recommend replacing them, please get in touch with the shop/dealer you purchased the kite from and they can order individual bridle lines or a full set if they do not already have stock.



### SPEED SYSTEM ZERO POSITION

You can check your Speed System lines by levelling the front and back line pigtails, then tension the three top ends of the Speed System where the bridle lines are attached, they should be at the same level + or - 15mm. See picture below.

If the difference between the three ends is bigger than 15mm you should replace your Speed System.

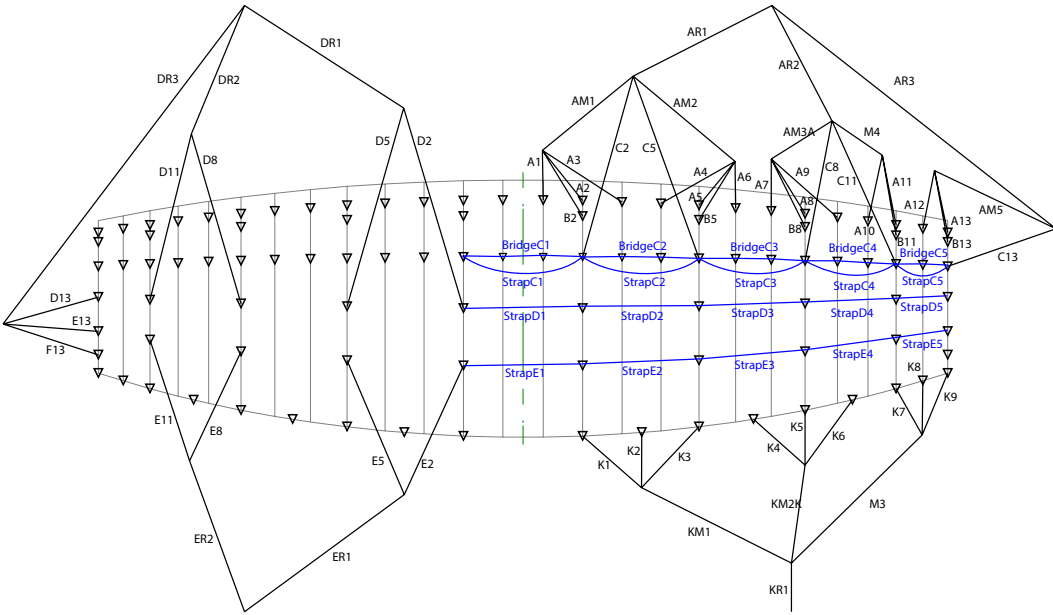


# BRIDLE CHECK SHEET. ALL MEASUREMENTS IN MM

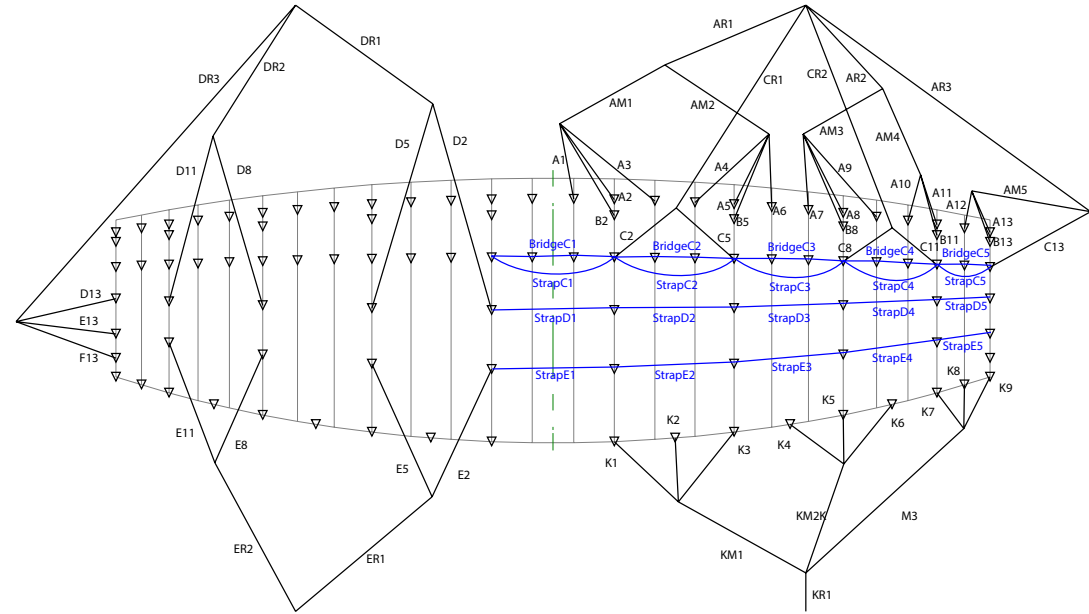
LINE NO.	4M	6M	9M	12M
A1	590	740	757	916
A2	505	640	628	789
A3	450	570	554	707
A4	555	705	712	965
A5	460	590	565	820
A6	395	500	472	711
A7	510	640	714	868
A8	400	500	540	686
A9	310	390	401	536
A10	395	505	576	808
A11	285	375	411	644
A12	325	435	637	492
A13	230	320	486	587
A14				426
AM1	1150	1450	1900	2100
AM2	950	1200	1600	1700
AM3	850	1000	1300	1350
AM4	650	750	950	900
AM5	250	250	400	700
AR1	700	800	1400	1600
AR2	550	700	1250	1600
AR3	800	1000	1400	1500
B2	495	625	614	772
B5	450	575	552	804
B8	390	490	529	673
B11	280	365	401	633
B13	215	295	477	
B14				416
C2	1640	2065	1884	2139
C5	1395	1765	1528	1776
C8	1220	1480	1251	1488
C11	895	1080	772	1004
C13	440	540	857	
C14				1090
CR1			2000	2300
CR2			1800	2100
D2	1250	1575	1916	2175
D5	1010	1285	1560	1813
D8	940	1040	1280	1522
D11	630	665	797	1033
D13	430	515	784	
D14				811
DR1	1100	1300	2000	2300
DR2	850	1150	1800	2100
DR3	850	1050	1500	1800

LINE NO.	4M	6M	9M	12M
E2	1285	1620	1968	2233
E5	1050	1330	1611	1870
E8	975	1085	1325	1573
E11	655	695	830	1073
E13	410	505	795	
E14				824
ER1	1100	1300	2000	2300
ER2	850	1150	1800	2100
F13	445	550	840	
F14				879
K1	810	970	1258	1472
K2	645	765	987	1196
K3	510	600	757	953
K4	675	825	975	1212
K5	485	590	669	893
K6	325	390	402	602
K7	400	475	527	786
K8	300	355	362	587
K9	240	280	255	427
K10				330
KM1	1000	1250	1500	1650
KM2	650	800	1000	1100
KM3	400	500	600	650
KR1	1470	1650	2270	2520
StrapC1	507	621	761	795
StrapC2	494	605	742	778
StrapC3	455	558	683	725
StrapC4	415	509	623	645
StrapC5	249	305	372	615
StrapD1	507	621	761	795
StrapD2	494	605	742	778
StrapD3	455	558	683	725
StrapD4	416	510	625	642
StrapD5	249	305	373	618
StrapE1	507	621	761	795
StrapE2	494	606	742	778
StrapE3	456	559	685	726
StrapE4	420	515	630	644
StrapE5	248	304	372	621
LSL	2780	3130	3960	4500
ISL	2200	2650	3300	3550

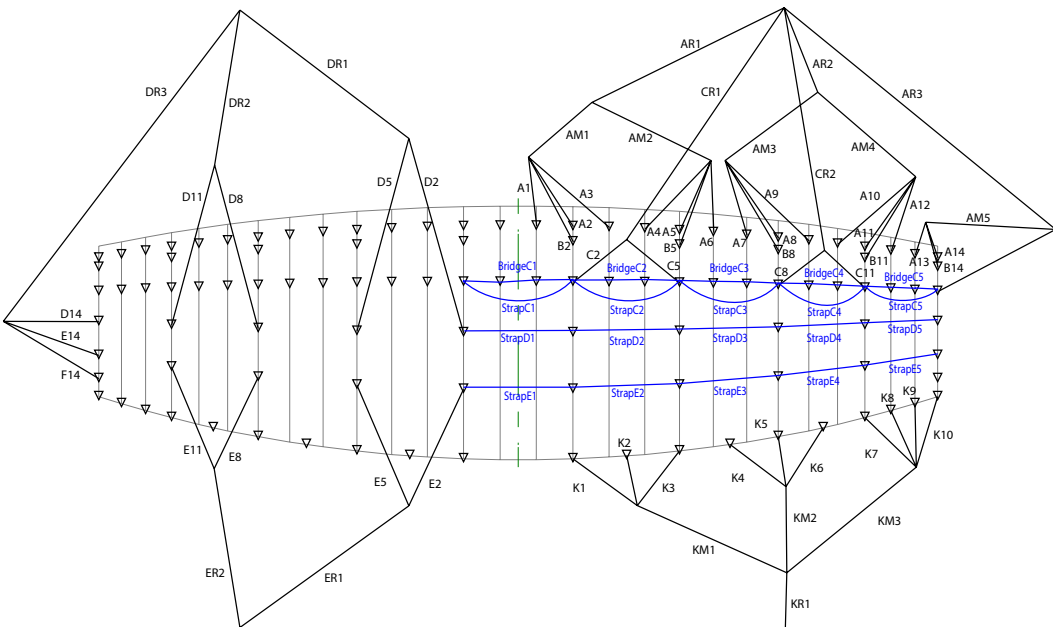
### EXPLORE V1 4M/6M RIGGING DIAGRAM



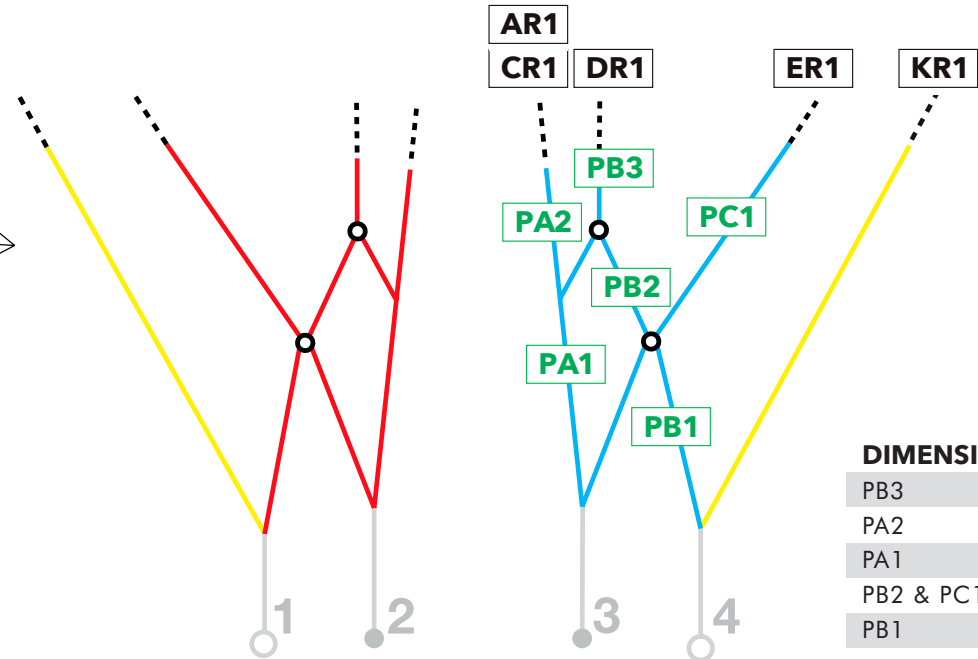
### EXPLORE V1 9M RIGGING DIAGRAM



### EXPLORE V1 12M RIGGING DIAGRAM



### SPEED SYSTEM



#### DIMENSIONS:

PB3	245
PA2	373
PA1	530
PB2 & PC1	405
PB1	960

