

CONTACT-SNOW CONTROL SYSTEM



INSPIRED BY NATURE // DRIVEN BY THE ELEMENTS // FLYOZONE.COM    OZONEKITES

THE CONTACT-SNOW CONTROL SYSTEM OFFERS THE LATEST IN RELEASE FEATURES, A CLEAN CONTROL BAR DESIGN AND A SIMPLE EASY-TO-USE TRIMMING SYSTEM.



PUSH AWAY QUICK RELEASE

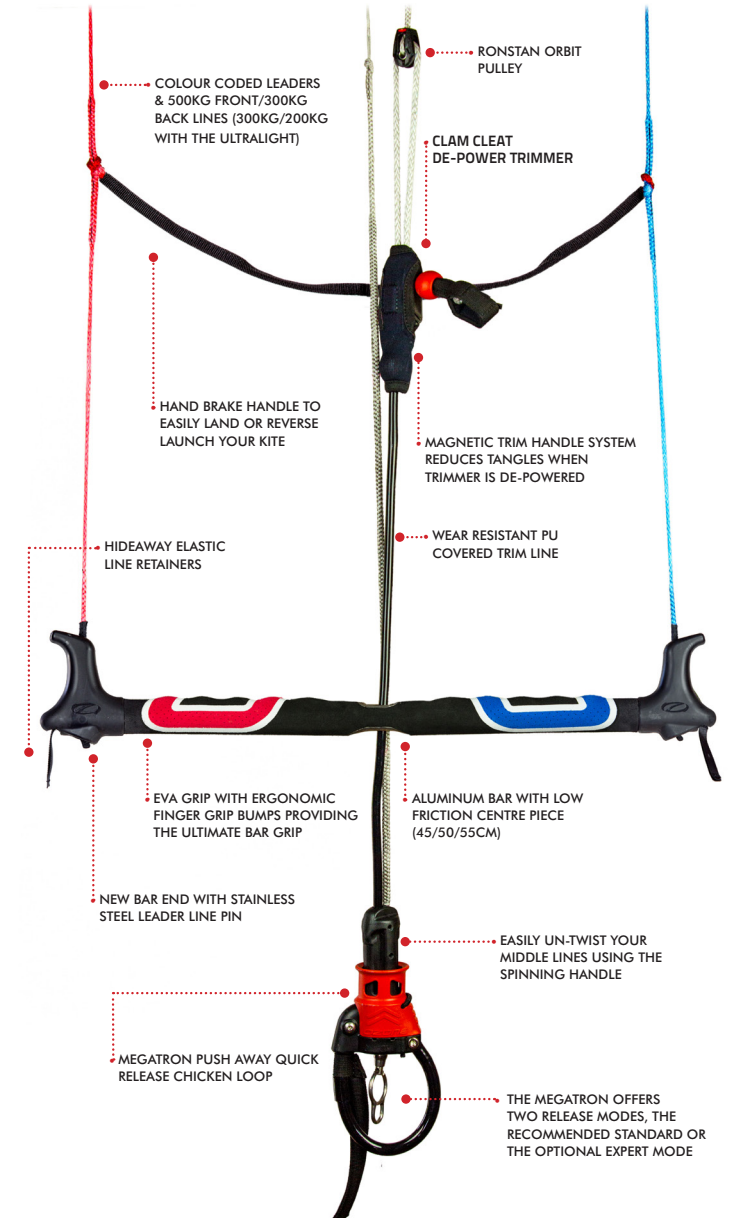
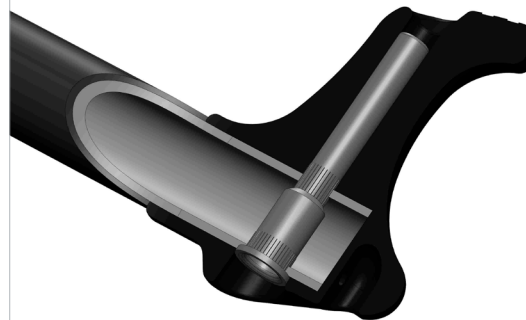
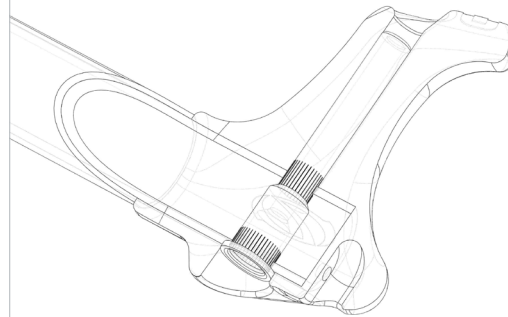
The control system features our Megatron push-away quick release with total flag out of the kite. The release handle is ergonomic with positive release forces for quick and easy release. Simple re-assembly saves time and gets you back up and riding faster.

TWO RELEASE MODES – The Megatron offers riders a choice of two release modes, the recommended Standard or the optional Expert mode.

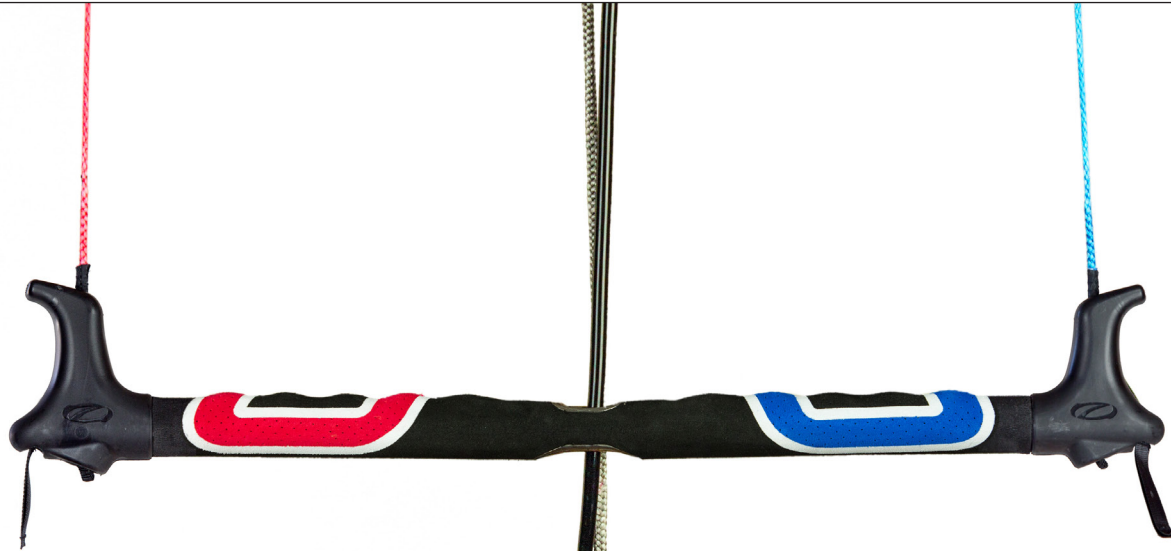
- Standard mode offers 100% flag out in all situations by releasing the Megatron or letting go of the bar when un-hooked. It activates the all new Internal Re-ride Release System on the kite. The kite will stall and fall to the ground without any power. After reassembling the chicken loop you can launch your kite and ride again.
- Expert mode offers 100% flag out only when the Megatron is released whilst hooked in, allowing riders practicing handle passes to let go of the bar without releasing the kite to flag out (not recommended).

NEW BAR END WITH STAINLESS STEEL LEADER LINE PIN

Superior strength is achieved with a Stainless pin running through the bar. This creates an ultra strong and direct connection between the control bar to flying lines.



CONTACT-SNOW CONTROL SYSTEM



BAR SIZE

The Contact-Snow Control System bar sizes come in 45cm, 50cm and 55cm.

CHICKENLOOP

The larger size PU chicken loop (sold separately) is perfect for riders with longer arms or requiring even easier hooking in & out.

ANTI-TWIST FLAG OUT LINE AND SPINNING HANDLE

The flag out line running through the Megatron & kite leash attachment at the bottom keeps the leash tangle free when doing rotations and manually unwinding the centre lines using the Spinning Handle.

ALL HIGH QUALITY STAINLESS STEEL HARDWARE



PU COVERED DE-POWER LINE

The tough PU covered de-power line significantly reduces wear when sheeting in and out.

LOW FRICTION CENTRE PIECE

The control bar features a low friction centre piece designed to reduce wear.

EVA GRIP

Lightly sanded with ergonomic finger bumps providing the ultimate bar grip.

AUTO POSITIONING CHICKEN LOOP

Designed in conjunction with the bar centre piece, the Megatron spinning handle auto positions the chicken loop when unhooking.

EASY FLYING LINE SORTING

If your flying lines get twisted you can easily undo them from the bar leader lines by opening the larks head knot and removing the twists. No need to walk up to your kite anymore.

NOTE: Activate the Internal Re-ride Release System by pulling the 5th line through the chicken loop and secure it at the spliced in loop approx 2m up the line before you undo any flying line from the bar leader lines.

RONSTAN ORBIT PULLEY

The smooth running Ronstan Orbit Pulley also prevents trim line wear.



MAGNETIC TRIM HANDLE

The Magnetic trim handle connects to a magnetic neoprene sock covering the clam cleat to reduce tangles when the trimmer is de-powered.

HAND BRAKE HANDLE

Easily land or reverse launch your kite using the Hand Brake Handle

